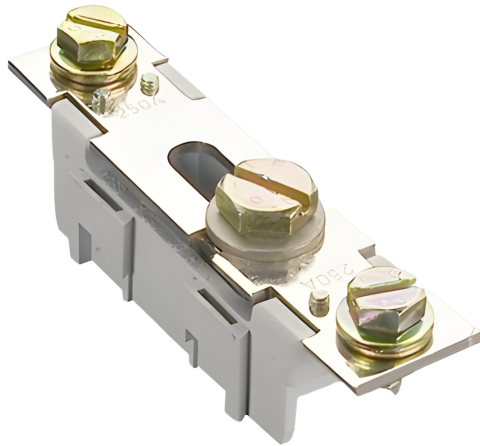


neutral conductor 250 A, disconnectable (03657)



The picture may show a similar product.

Description

Part No.: **03657 000**
neutral conductor 250 A, disconnectable
screw M8 at both sides
120 mm long
for mounting plate

System

Panel

Product group 10

Subgroup 65

pack size 10

EAN 4021267036577

ETIM 5.0 EC002498

ETIM 8.0 EC002498

Approvals

Standards

IEC 61439-1:2020

CCC approval: no certification required

Technical data

Details IEC

Standards

IEC 61439-1:2020

Electrical data IEC

rated current (IEC): 250 A

rated voltage (IEC) AC: 690 V

rated voltage (IEC) DC: 440 V

power dissipation of the article:

The power dissipation at a typical load of 80 % results to 1.9 W.

(The power dissipation at full load would be 2.9 W.)

Supplementary data IEC

The following values have been verified with tests under certain conditions. Please ask Wöhner for this conditions before designing your panel.

max. permitted voltage (IEC) AC: 800 V

max. permitted voltage (IEC) DC: 800 V

Mechanical data

W x H x D: 35 x 120 x 28

weight: 19.5 kg/100

poles: 1-pole

Mounting: for mounting plate

external connection M8 / 8 - 10 Nm
internal connection M10 / 10 - 12 Nm

Terminal points

Md min.: 8.0 Nm
Md max.: 10.0 Nm

Material properties

halogen-free: Yes

Application notes

The insulation performance of the article depends on the installation conditions.

<https://pim.woehner.de/EN/EN/1000048097>